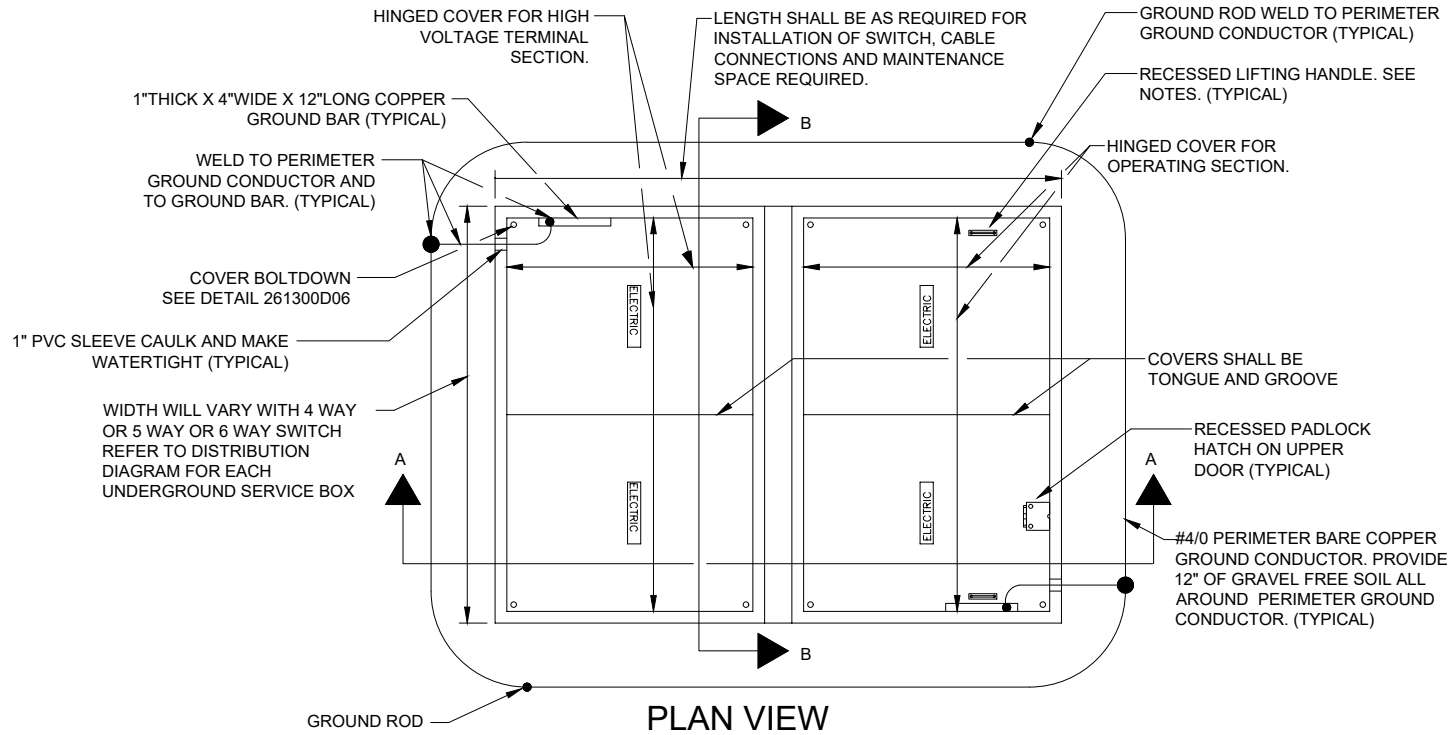
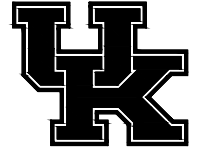


261300D01 MEDIUM VOLTAGE SWITCHGEAR

Construction Details - Typical Underground Switch Vault



TYPICAL UNDERGROUND SWITCH VAULT

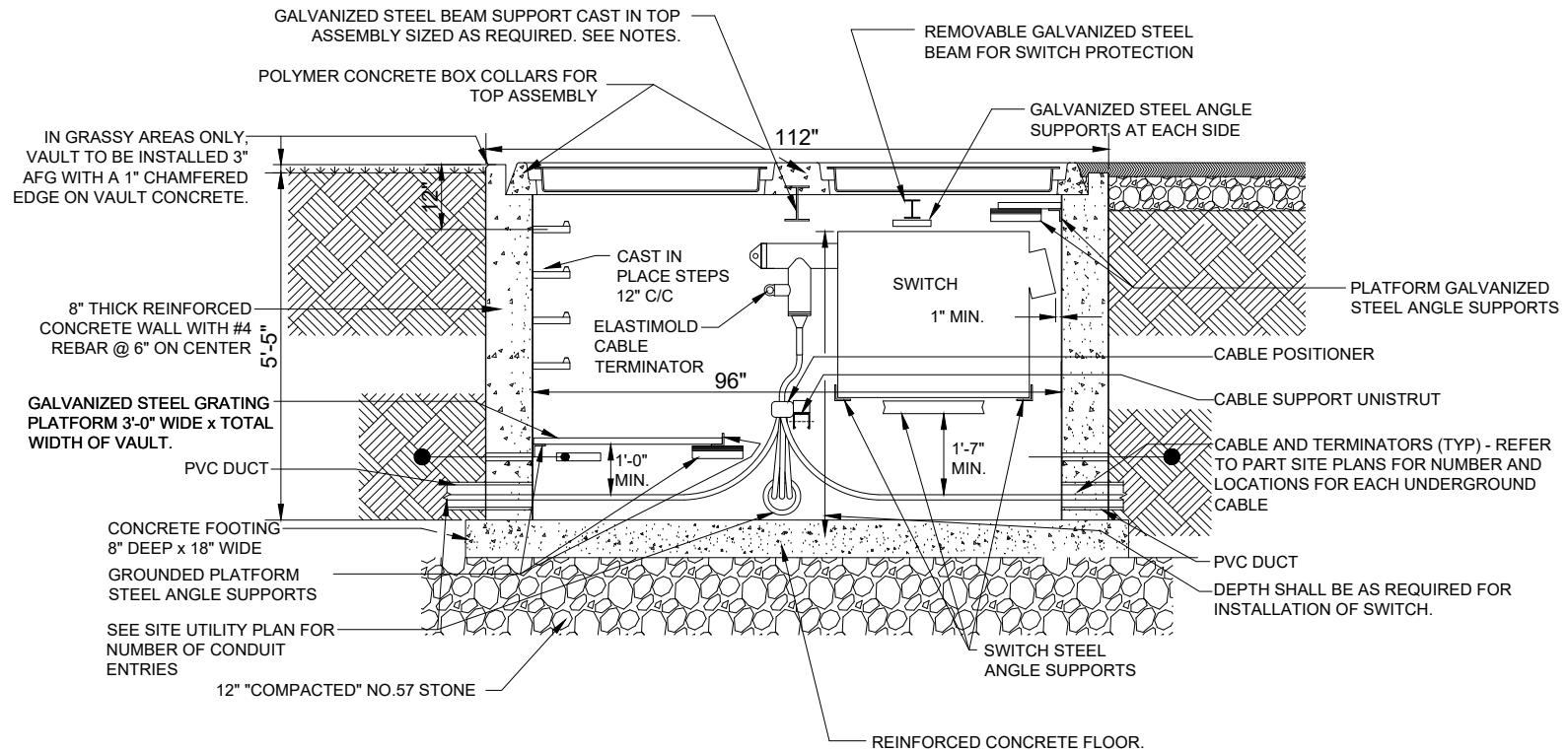
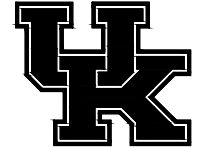
NO SCALE

GENERAL NOTES:

1. SWITCH VAULT MAY BE PRE-CAST OR CAST IN PLACE CONCRETE, WALLS AND FLOOR ONLY.
2. SWITCH VAULT COVER AND TOP ASSEMBLY SHALL COMPLY WITH ASTM C857 A-16 LOAD DESIGNATION AND CONSIST OF TWO LIFT OUT CONCRETE LIDS. EACH LID SHALL HAVE A ACCESS HATCH CONSISTING OF TWO HINGED DOORS - HALLIDAY ALUMINUM HATCH H2R SERIES WITH THE PADLOCK OPTION. THE DOORS SHALL OPEN IN THE SAME DIRECTION AND ADJOIN ON THE SHORT SIDES.
3. COVERS AND TOP ASSEMBLY SHALL BE CONCRETE GRAY IN COLOR, WHEN INSTALLED IN STREETS, WALKS OR PAVED AREAS AND GREEN IN COLOR WHEN INSTALLED IN GRASS AREAS.
4. OPERATING SECTION SHALL HAVE HINGED COVER WITH TWO DROP-IN STYLE HANDLES.

261300D02 MEDIUM VOLTAGE SWITCHGEAR

Construction Details - Typical Underground Switch Vault



SECTION A-A

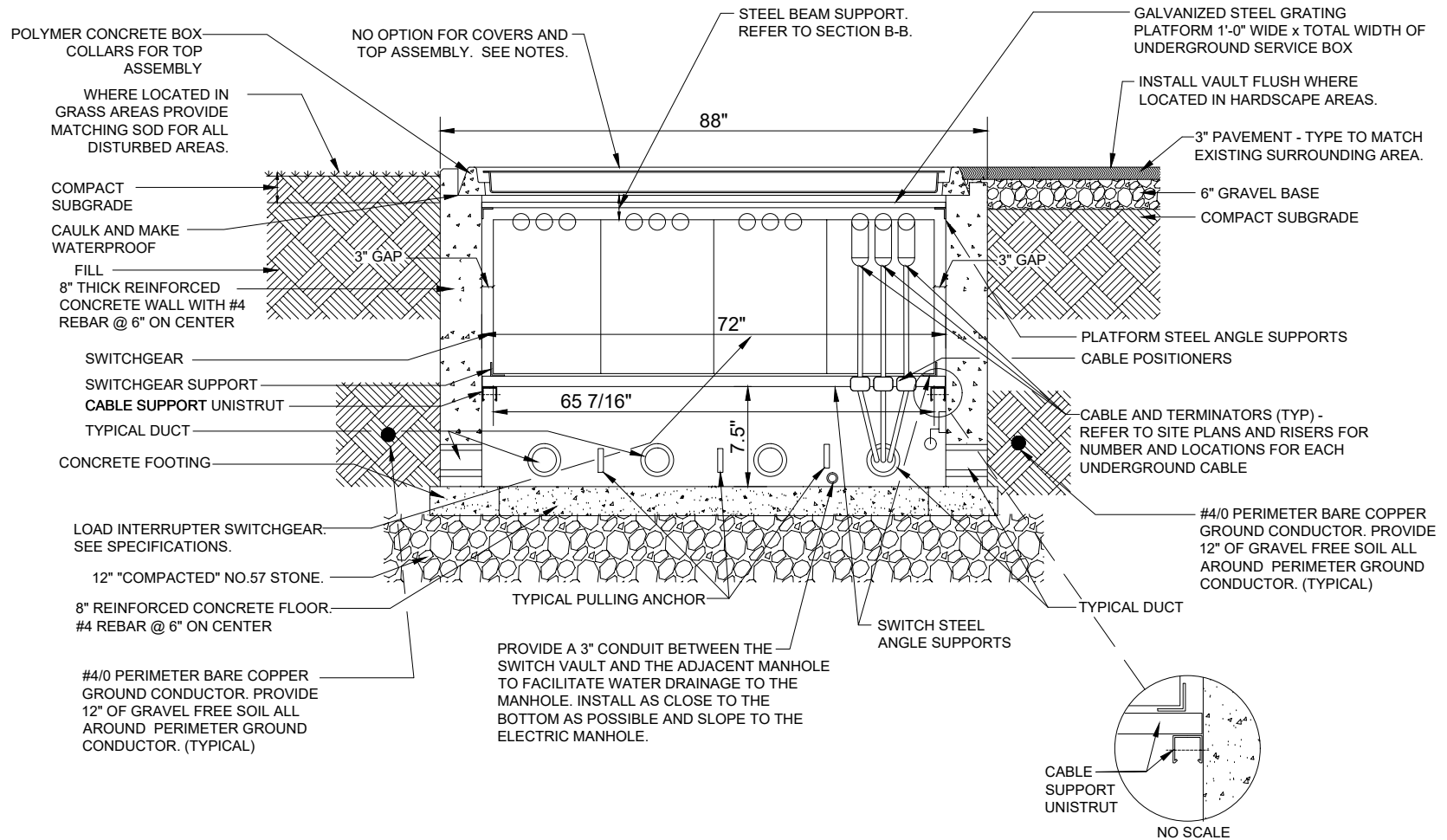
TYPICAL UNDERGROUND SWITCH VAULT

NO SCALE

FOR 4 WAY, 5 WAY AND 6 WAY

261300D03 MEDIUM VOLTAGE SWITCHGEAR

Construction Details - 4 Way Underground Switch Vault



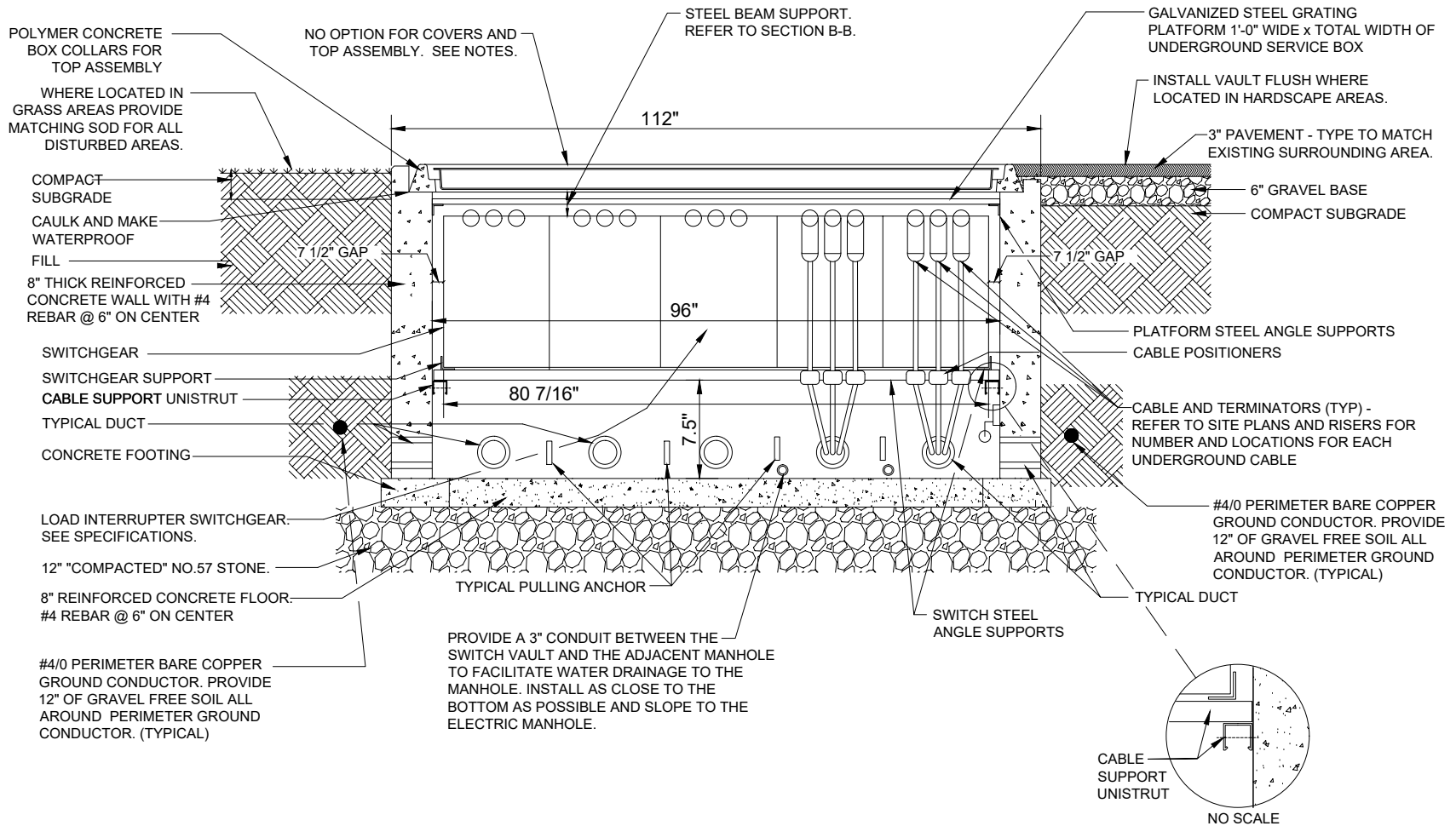
SECTION B-B

4 WAY UNDERGROUND SWITCH VAULT

NO SCALE

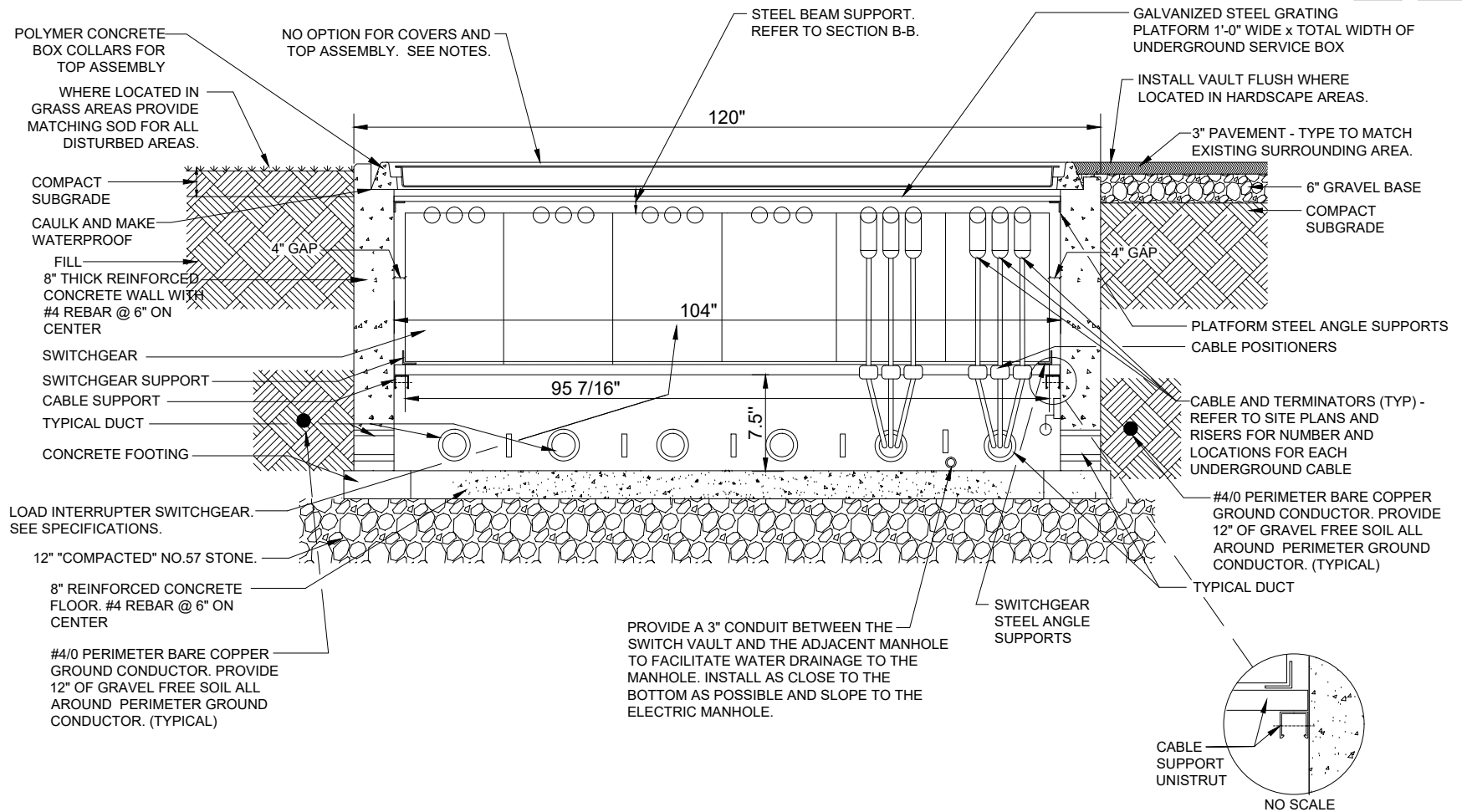
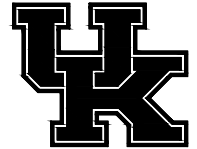
261300D04 MEDIUM VOLTAGE SWITCHGEAR

Construction Details - 5 Way Underground Switch Vault



261300D05 MEDIUM VOLTAGE SWITCHGEAR

Construction Details -6 Way Underground Switch Vault



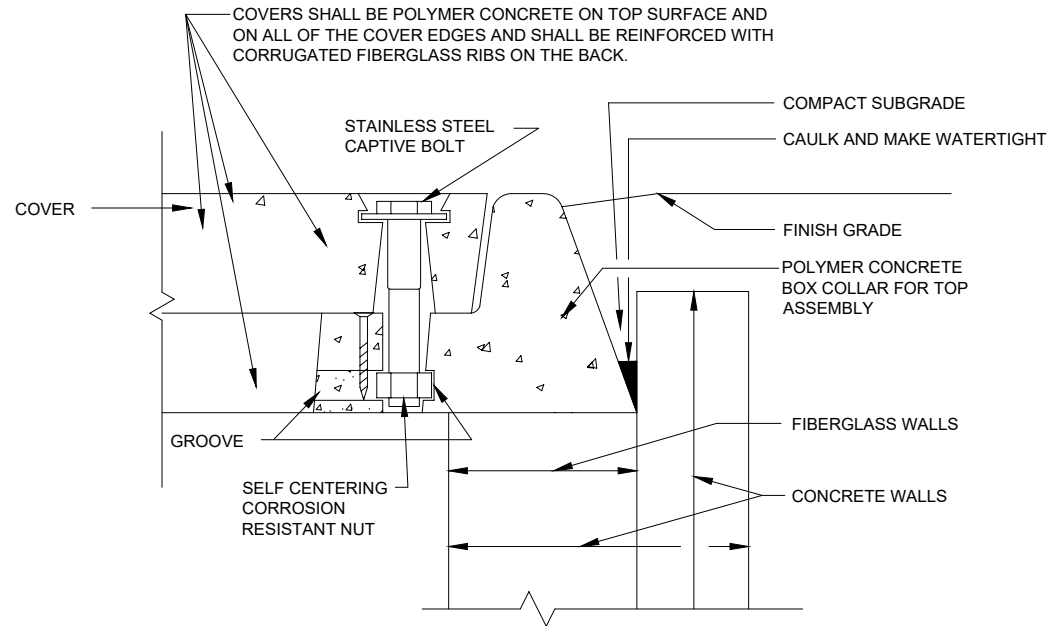
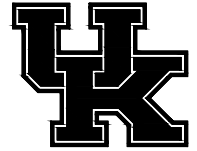
SECTION B-B

6 WAY UNDERGROUND SWITCH VAULT

NO SCALE

261300D06 MEDIUM VOLTAGE SWITCHGEAR

Construction Details - COVER BOLT DOWN DETAIL



COVER BOLT DOWN DETAIL

NO SCALE