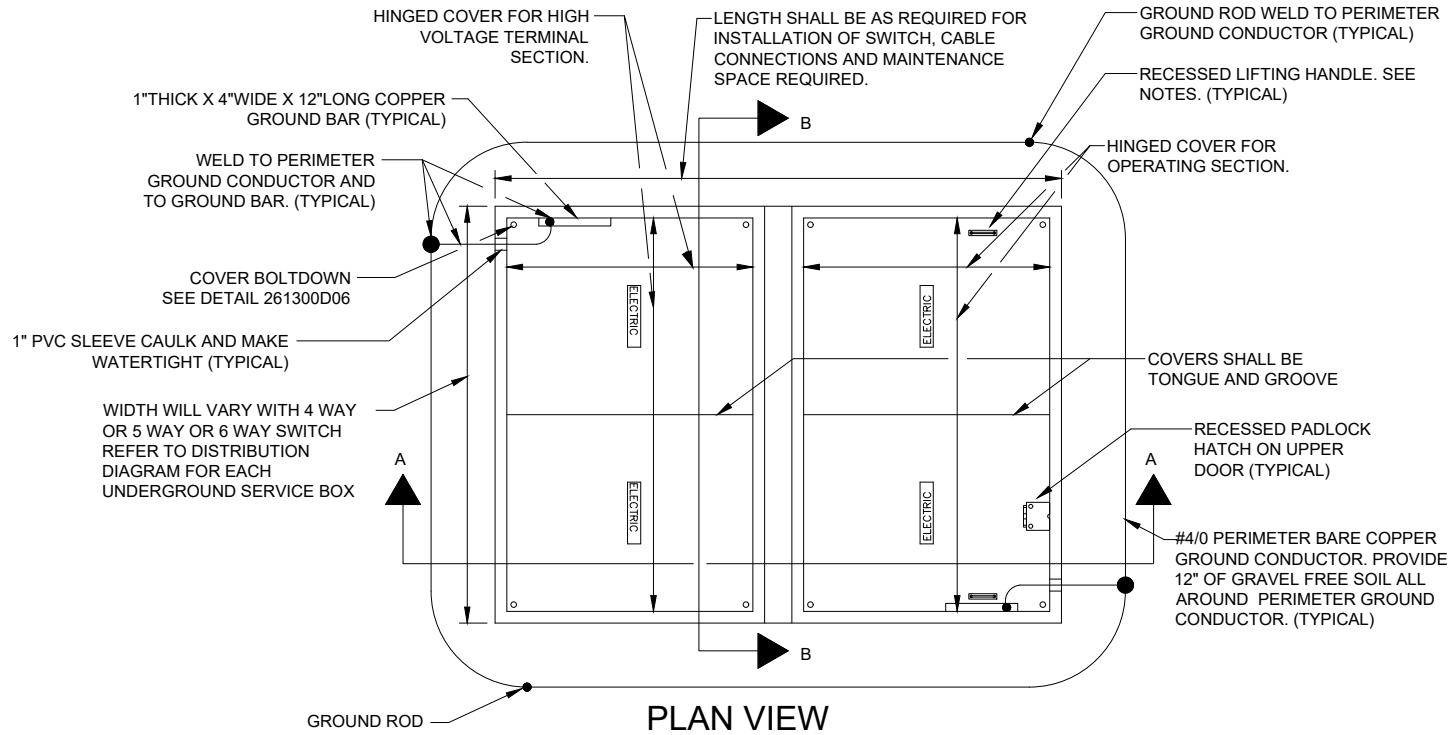


# 261300D01 MEDIUM VOLTAGE SWITCHGEAR

## Construction Details - Typical Underground Switch Vault



# TYPICAL UNDERGROUND SWITCH VAULT

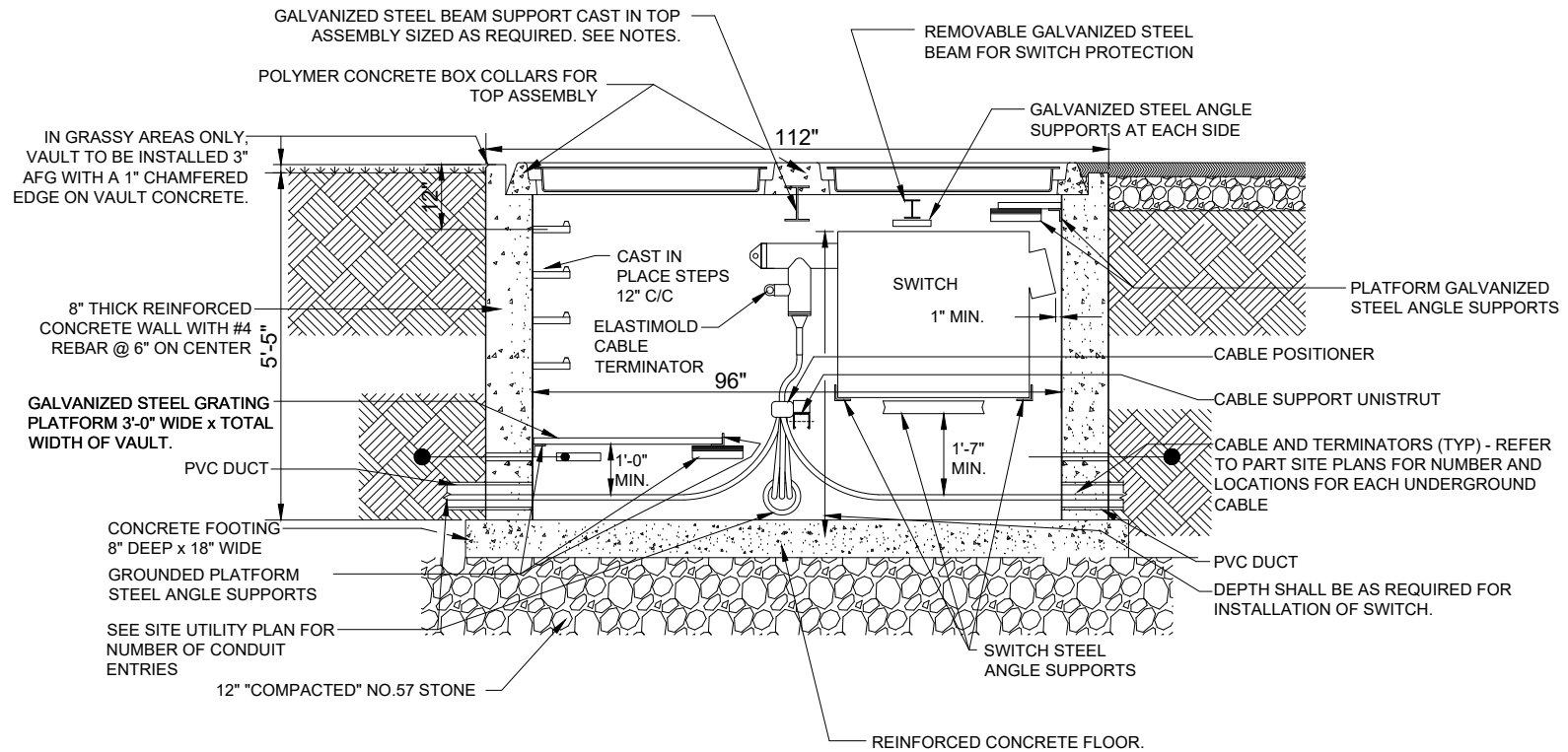
NO SCALE

### GENERAL NOTES:

1. SWITCH VAULT MAY BE PRE-CAST OR CAST IN PLACE CONCRETE, WALLS AND FLOOR ONLY.
2. SWITCH VAULT COVER AND TOP ASSEMBLY SHALL COMPLY WITH ASTM C857 A-16 LOAD DESIGNATION AND CONSIST OF TWO LIFT OUT CONCRETE LIDS. EACH LID SHALL HAVE A ACCESS HATCH CONSISTING OF TWO HINGED DOORS - HALLIDAY ALUMINUM HATCH H2R SERIES WITH THE PADLOCK OPTION. THE DOORS SHALL OPEN IN THE SAME DIRECTION AND ADJOIN ON THE SHORT SIDES.
3. COVERS AND TOP ASSEMBLY SHALL BE CONCRETE GRAY IN COLOR, WHEN INSTALLED IN STREETS, WALKS OR PAVED AREAS AND GREEN IN COLOR WHEN INSTALLED IN GRASS AREAS.
4. OPERATING SECTION SHALL HAVE HINGED COVER WITH TWO DROP-IN STYLE HANDLES.

# 261300D02 MEDIUM VOLTAGE SWITCHGEAR

## Construction Details - Typical Underground Switch Vault



### SECTION A-A

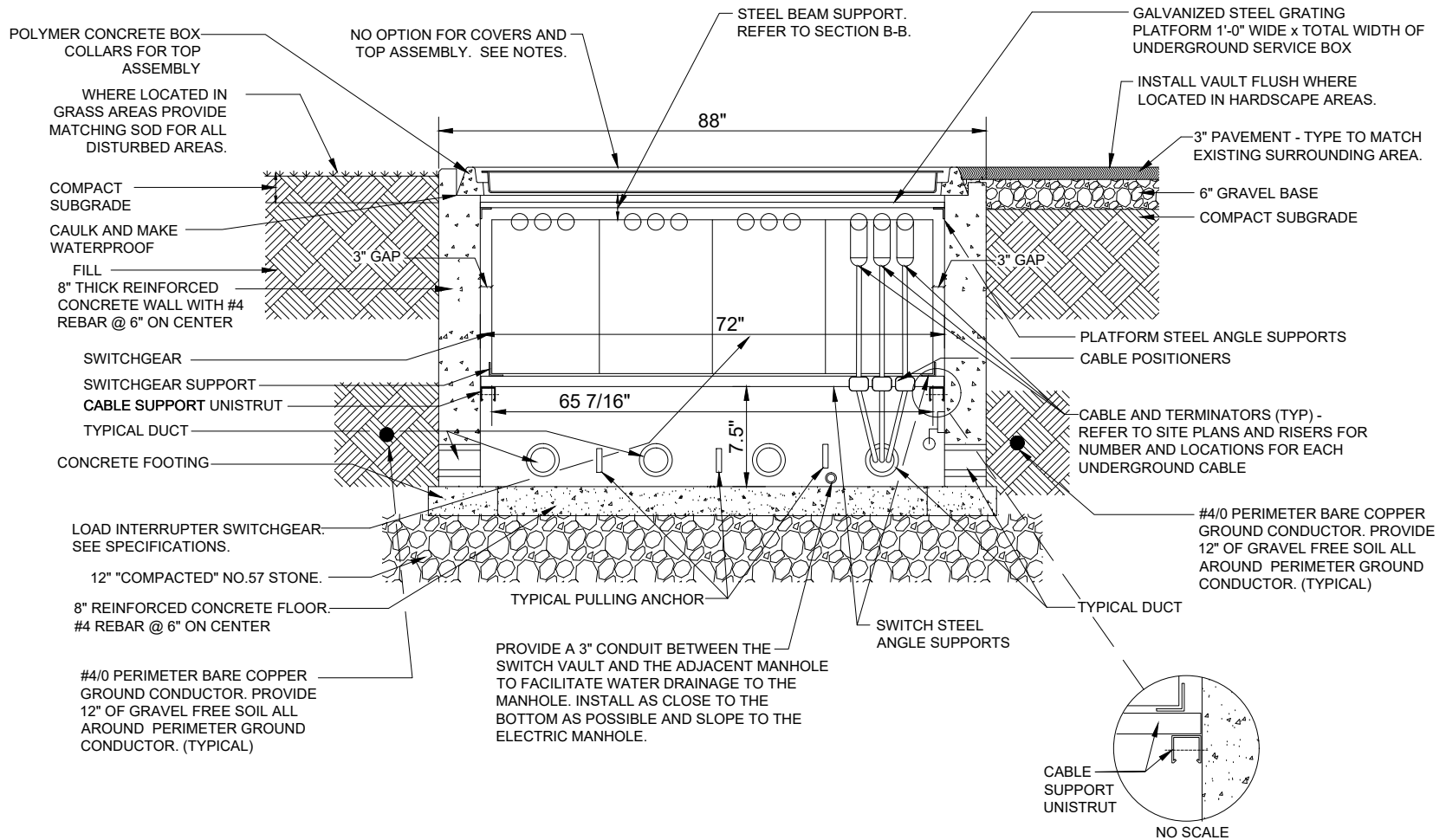
## TYPICAL UNDERGROUND SWITCH VAULT

NO SCALE

FOR 4 WAY, 5 WAY AND 6 WAY

# 261300D03 MEDIUM VOLTAGE SWITCHGEAR

## Construction Details - 4 Way Underground Switch Vault



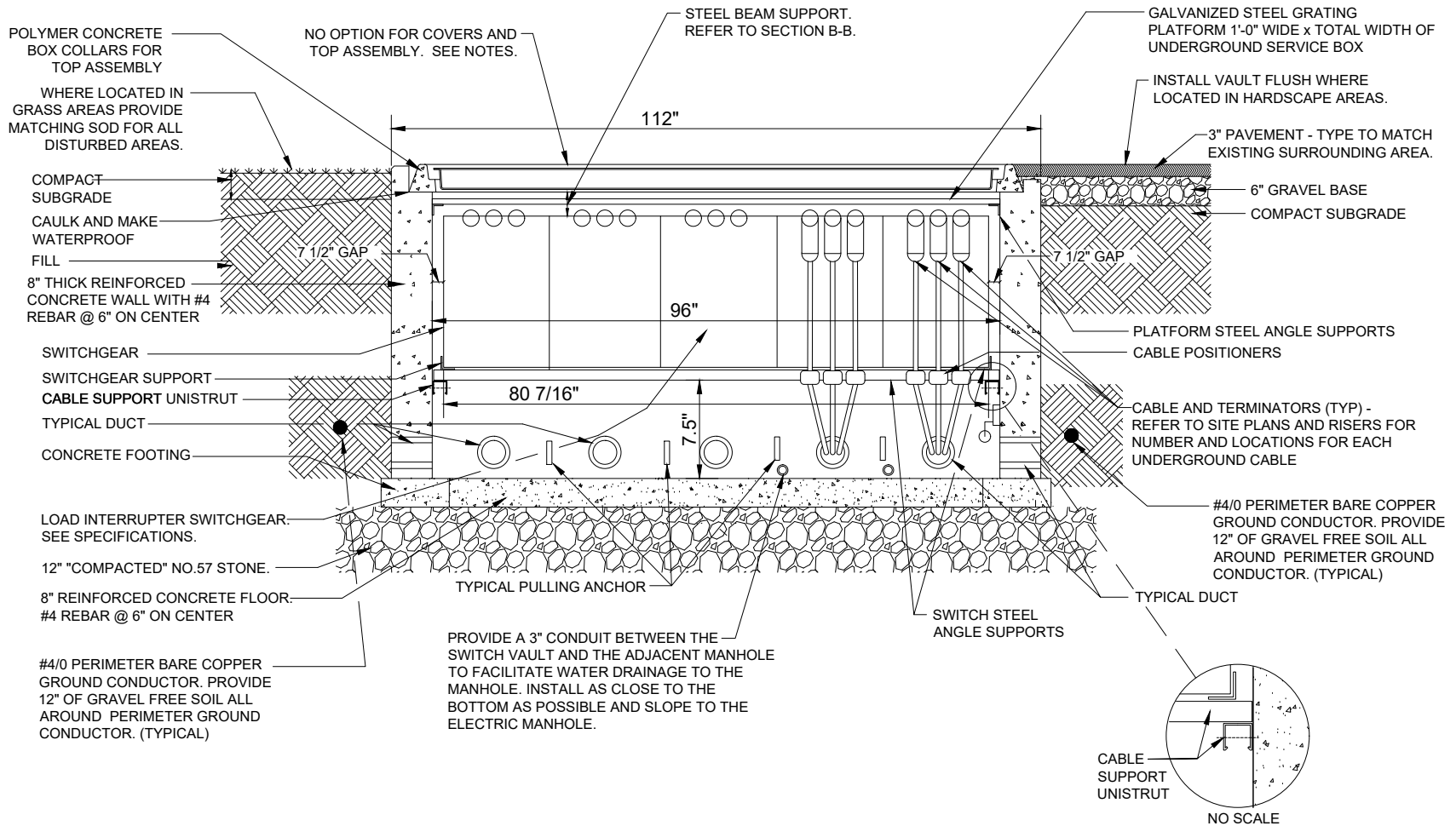
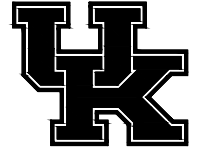
### SECTION B-B

# 4 WAY UNDERGROUND SWITCH VAULT

NO SCALE

# 261300D04 MEDIUM VOLTAGE SWITCHGEAR

## Construction Details - 5 Way Underground Switch Vault



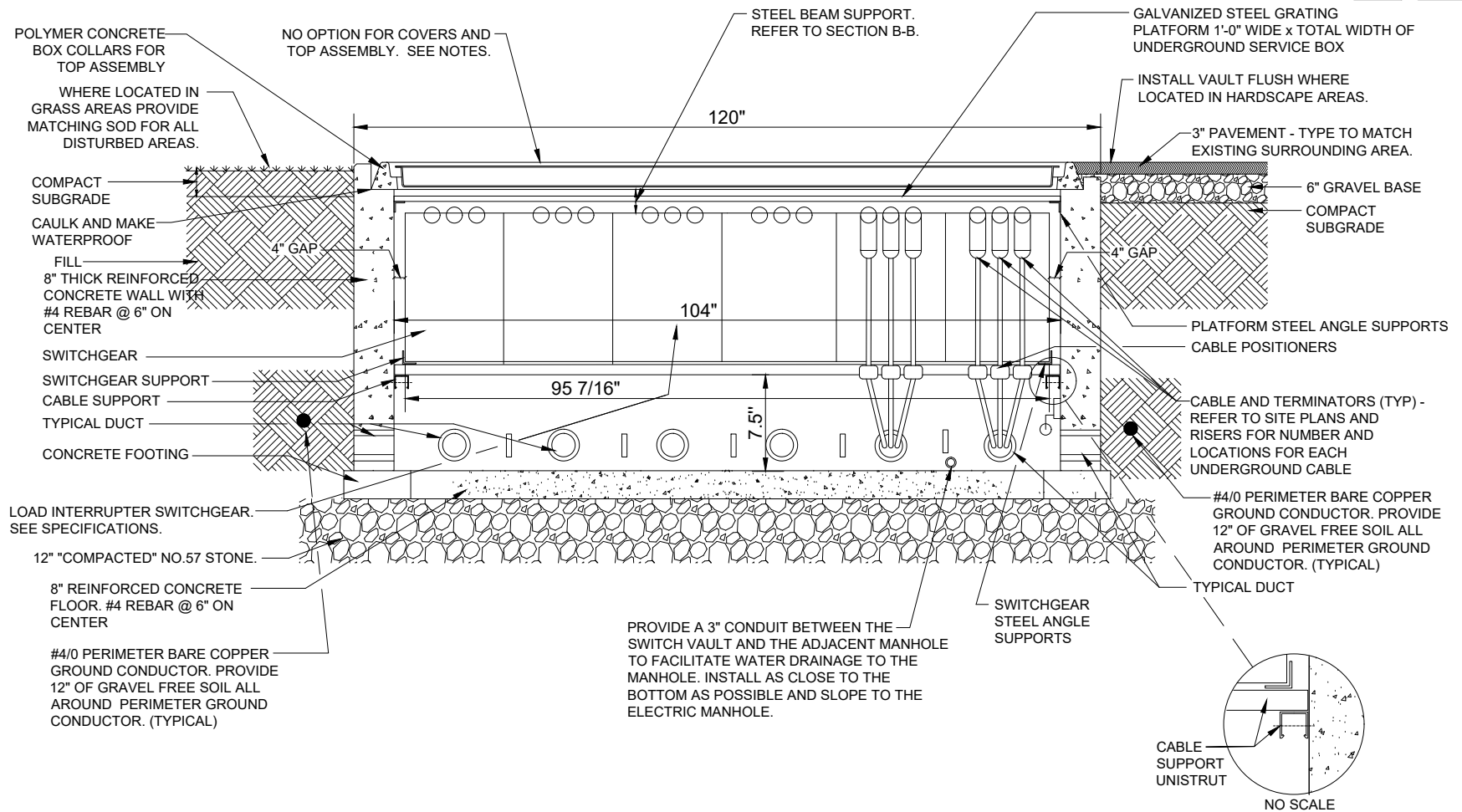
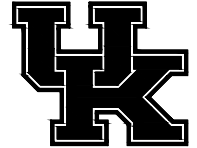
### SECTION B-B

# 5 WAY UNDERGROUND SWITCH VAULT

NO SCALE

# 261300D05 MEDIUM VOLTAGE SWITCHGEAR

## Construction Details -6 Way Underground Switch Vault



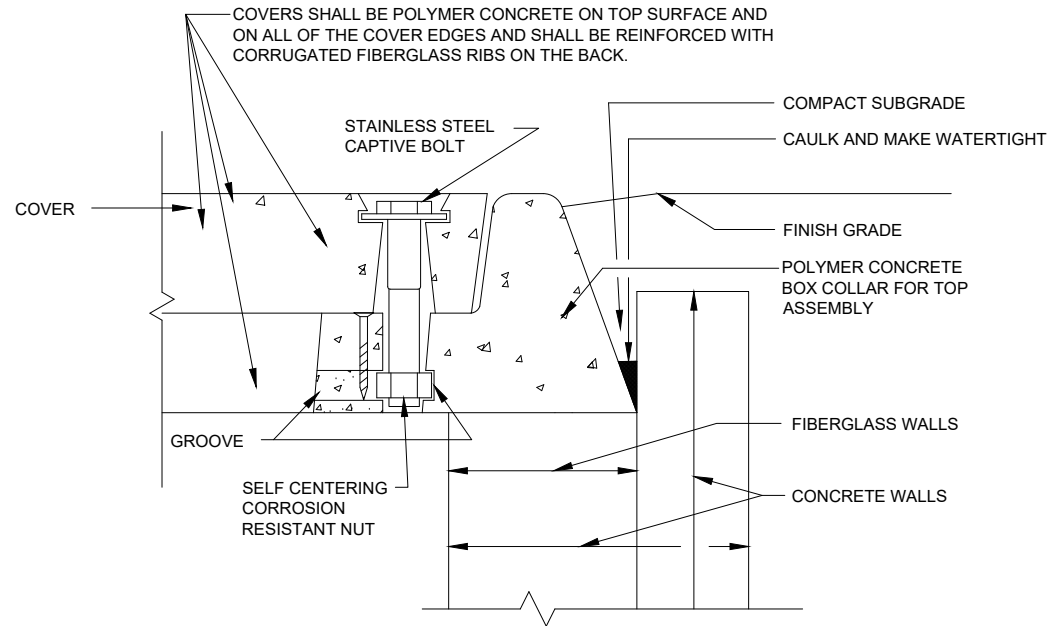
### SECTION B-B

## 6 WAY UNDERGROUND SWITCH VAULT

NO SCALE

# 261300D06 MEDIUM VOLTAGE SWITCHGEAR

## Construction Details - COVER BOLT DOWN DETAIL



## COVER BOLT DOWN DETAIL

NO SCALE